



POWDER & INDUSTRIAL COATINGS

KNOWN FOR EXCELLENCE

Commercial Project Reference & Specification Guide



TABLE OF
CONTENTS

Quality and Service	03
Product Range	04
Known for Excellence	06
Monumental Projects	08
Major Projects	20
Project Listing	24
How to Specify	26
Our History	28
Our Locations	30



Dulux has a long history of providing extremely durable powder coating finishes for monumental commercial construction projects across Asia, Australia, New Zealand and the Middle East.

Our range of premium products are formulated to provide outstanding durability performance in the harshest environments.

For the longest lasting finish, it pays to specify the most durable grade of powder coating available, as the relatively small price premium invested in the cost of the coating, will ensure your project looks better for longer, resulting in significantly lower costs over the service life of your project.

Our portfolio demonstrates actual project examples of Dulux super and ultra durable grade coatings, along with detailed information designed to help you make the right coating choice for your project.

LEFT: A'Beckett Tower
COVER: ASB Headquarters

PRODUCT RANGE



FLUORASET® POWDER COAT RANGE

Fluoraset® is formulated for extremely harsh environments where the highest level of durability is required. It is supported by a 30 year durability warranty* when applied by a Dulux Registered Applicator, giving you confidence that your coating will stand the test of time.

- Projects where product performance is under constant review
- All commercial and residential projects, irrespective of height
- When class leading colour and gloss retention is desired
- Developments further than 10 metres from salt water
- Exceeds AAMA 2605-11 performance standard
- Supported by a 30 year durability warranty*



PROJECT: Perth Arena

COLOUR: Xtreme™ Black

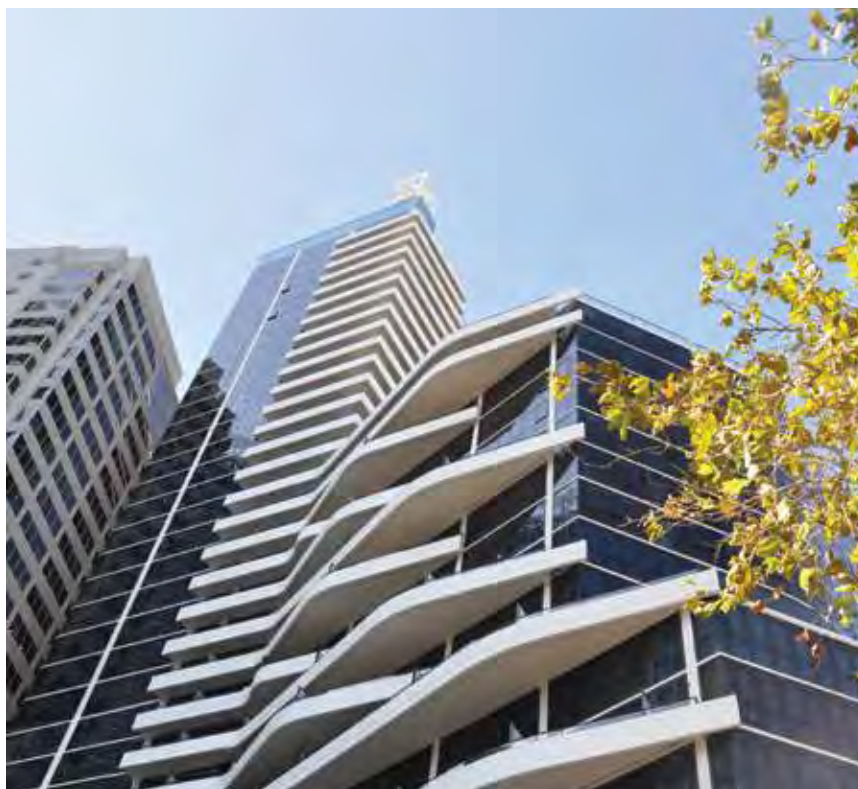
Photo: Cameron Chisholm Nicol/Greg Hocking Photography



DURATEC® POWDER COAT RANGE

For many years, the most widely specified super durable coating on high rise commercial projects throughout Australia and New Zealand. Our advanced polyester resin technology, combined with high performance pigments, exceed the internationally recognised performance standard AAMA 2604-10, delivering excellent gloss and colour retention when compared to standard polyester powder coatings.

- High rise commercial projects
- Major commercial and residential developments, irrespective of the building height and in most environments
- Developments further than 10 metres from salt water
- Supported by a 20 year durability warranty*
- Achieves AAMA 2604-10 performance standard



PROJECT: Inmark Tower

COLOUR: Eternity® Charcoal Pearl

Photo: Parkview Group (Australia) Pty Ltd.

PRODUCT RANGE



ELECTRO™
POWDERCOAT RANGE

With an anodised look, Electro™ is cleverly designed to subtly change in appearance as light conditions alter throughout the day. With our advanced polyester resin technology, Electro™ is supported by a 20 year durability warranty*, exceeding the performance requirements set out in the internationally recognised AAMA 2604-10 standard.

- High rise commercial projects
- Commercial & residential developments irrespective of the building height and in most environments
- Developments further than 10 metres from salt water
- Achieves AAMA 2604-10 performance standard
- Supported by a 20 year durability warranty*



PROJECT: Nundah Circa - Building 2B

COLOURS: Dark Bronze, Golden Touch, Black Ace, Natural Silver & Shimmering Champagne

Photo: Arkhefield



DURALLOY®
POWDERCOAT RANGE

Duralloy® is a versatile powder coating formulated to meet the AAMA 2603-05 performance standard for exterior architectural aluminium joinery. In addition, Duralloy is suitable for a variety of architectural elements such as fences and interior fit out items.

- Suitable for properties situated more than 100 metres from salt water
- Exceeds AAMA 2603-05 performance standard
- Supported by a 10 year durability warranty* on residential projects up to 3 floors from the ground



PROJECT: Queenstown Skyline Gondola Restaurant & Bar

COLOUR: Anotec® Mid Bronze

KNOWN FOR EXCELLENCE

ACROSS VARIOUS LOCATIONS & ENVIRONMENTS



Project: Goodwood Residences
Location: Bukit Timah, Singapore
Colour: Natural Silver
Components Coated: Aluminium extrusions, mullions, louvers
Date Completed: 2012



Project: Royal Beach Hotel
Location: Tel Aviv, Israel
Colour: Sandstone
Components Coated: Aluminium Profiles
Date Completed: 2012



Project: Puri Bank
Location: Jakarta, Indonesia
Colour: Puri Green
Components Coated: Aluminium Extrusion
Date Completed: 1994



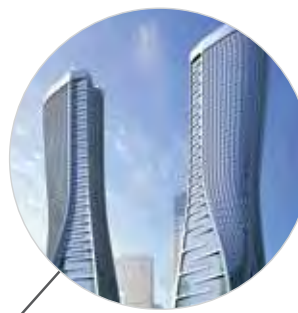
Project: GKBI Tower
Location: Jakarta, Indonesia
Colour: Grey Green
Components Coated: Joinery
Date Completed: 1994



Project: Perth Arena
Location: Perth, Australia
Colour: Xtreme™ Black
Components Coated: Perforated Aluminium
Date Completed: 2012



Project: Prima Tower
Location: Melbourne, Australia
Colour: Dark Bronze
Components Coated: Aluminium Facades
Date Completed: Under construction



20 DURATEC®
POWDERCOAT RANGE

Project: Hangzhou Raffles City
Location: Zhejiang, China
Colour: Grey Matt
Components Coated: Aluminium Panels
Date Completed: Under construction



30 FLUOROSET®
POWDERCOAT RANGE

Project: Clyde Quay
Location: Auckland, New Zealand
Colours: Pewter Pearl & Electric Cow
Components Coated: Joinery
Date Completed: 2013



20 DURATEC®
POWDERCOAT RANGE

Project: ASB Headquarters
Location: Auckland, New Zealand
Colour: Aluco Bronze
Components Coated: Louvres
Date Completed: 2013



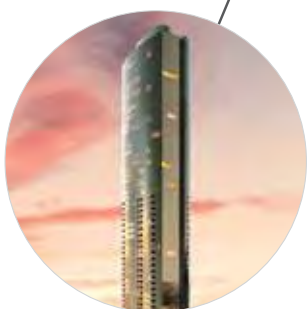
30 FLUOROSET®
POWDERCOAT RANGE

Project: Sydney Domestic Airport Terminal, T2 Pier A Expansion
Location: Sydney, Australia
Colour: Xtreme™ Coin Satin
Components Coated: Window and door sections
Date Completed: 2012



E ELECTRO®
POWDERCOAT RANGE

Project: NAB-D2
Location: Docklands, Australia
Colour: Natural Silver
Components Coated: Aluminium Trims & Glazing Sections
Date Completed: 2012



KNOWN FOR EXCELLENCE
DELOITTE
80 QUEEN STREET
AUCKLAND



CONDITIONS



NATURAL

15.1° Average Temperature
1,240mm Annual Rainfall



EXTREME

0° – 34° Temperature range (min/max)
78% High average humidity

COLOUR



ELECTRIC COW



Project name: Deloitte 80 Queen Street

Location: Auckland, New Zealand

Colour: Electric Cow

Components Coated: Curtain Wall and External Joinery

Date Completed: 2008

KNOWN FOR EXCELLENCE ANU COLLEGE OF SCIENCE CANBERRA

"The Colleges of Science project for the Australian National University is a major redevelopment at the centre of the Campus Science precinct. The project was an extraordinary collaboration between the Lyons Design Team, ANU Scientists and the constructor of the project, Hindmarsh Australia.

Part of the idea within the building was for the external finishes to have a 'deep' colour - like looking into space. The ideal product was the Dulux Duratec® product in a metallic finish. The lustre in the finish changes the perception of the colour from flat to deep, providing a very pleasing result.

Of course, the product was also chosen for its durability and longevity – as these buildings need to stand the test of time."

– *Courtesy of Lyons*



CONDITIONS



NATURAL

13.5° Average Temperature
632.6mm Annual Rainfall



EXTREME

-10° – 42° Temperature range (min/max)
50% High average humidity

COLOUR



NOTRE DAME SATIN



Project name: ANU College of Science

Location: Canberra, Australia

Colour: Notre Dame Satin

Components Coated:

Aluminium Windows and Doors

Date Completed: 2013

Photo: Diana Snape Photography

KNOWN FOR EXCELLENCE
ASB HEADQUARTERS
AUCKLAND



CONDITIONS



NATURAL

20.6° Average Temperature
1,149mm Annual Rainfall



EXTREME

0° – 34° Temperature range (min/max)
78% High average humidity

COLOUR



ALUCO BRONZE



Project name: ASB Headquarters

Location: Auckland, New Zealand

Colour: Aluco Bronze

Components Coated: Louvres

Date Completed: 2013



KNOWN FOR EXCELLENCE SYDNEY DOMESTIC AIRPORT TERMINAL T2 PIER A EXPANSION



"This project was fast tracked with no ability for the project to fall behind schedule or exceed budget. As Sydney's Airport is located on the shoreline and chemical bi-products from jet fuel affect the buildings, good performance under extreme climatic conditions and exposure was paramount.

The design intent of the glazing system for this extension was to have the window frames become almost invisible against the glazing. Dulux Xtreme™ Coin Satin was available 'off-the-shelf' and met the climatic criteria.

For other elements of the building, Dulux were very involved in the process. They researched options, speedily couriered numerous samples on metal substrates and provided written documentation of lead times and costs. Dulux gave us great confidence that what we required could be achieved within tight time frames."

– *Courtesy of Jacqueline Urford, HBO+EMTB*



CONDITIONS



NATURAL

15° Average Temperature
649.2mm Annual Rainfall



EXTREME

0° – 45° Temperature range (min/max)
70% High average humidity

COLOUR



XTREME™ COIN SATIN



Project name: Sydney Domestic Airport Terminal, T2 Pier A Expansion

Location: Sydney, Australia

Colour: Xtreme™ Coin Satin

Components Coated: Window and Door Sections

Date Completed: 2012

Photo: Eric Sierens Photography

KNOWN FOR EXCELLENCE ROBERT MENZIES COLLEGE MARSFIELD

"Allen Jack+Cottier specified Dulux Duratec® to powder coat external balustrades, sunscreens and windows for Robert Menzies College. What set Dulux apart from other players in the market was the ability to source non-standard colours in a cost efficient manner, the assistance of Sales Representatives and a high quality product where the warranty period was maximised.

The use of the product allowed for welding to be concealed and the desired look and feel for the project was achieved"

– *Courtesy of Allen Jack+Cottier*



CONDITIONS



NATURAL

17° Average Temperature
1,149mm Annual Rainfall



EXTREME

-2° – 46° Temperature range (min/max)
253mm highest daily rainfall recorded
(6 August, 1986)

COLOUR



ZEUS® CHARCOAL SATIN



Project name: Robert Menzies College

Location: Marsfield, Australia

Colour: Zeus® Charcoal Satin

Components Coated: Aluminium Windows, Doors & Louvres

Date Completed: 2012

KNOWN FOR EXCELLENCE PERTH ARENA

"Perth Arena places extremely high demands on all products and finishes specified. The large numbers of patrons that utilize the many facilities on offer as well as the normal functions of putting a staged event together, from unloading, staging, storage, event management and putting on a show all placed a unique challenge for the designers to provide suitable and durable materials that not only perform well but look good.

Externally the demands can be higher; the Dulux range of powder coating products gave our designers a large choice of colours and finishes and provided the long term benefit of long term durability. Elements such as, facade louvres, frames and selected fittings are constantly being impacted and their need for constant performance is critical."

– *Courtesy of ARM + Cameron Chisholm Nicol*



CONDITIONS



NATURAL

18.7° Average Temperature
730.6mm Annual Rainfall



EXTREME

-1° – 45° Temperature range (min/max)
16.1 km/h Average wind speed

COLOUR



XTREME™ BLACK SATIN



Project name: Perth Arena

Location: Perth, Australia

Colour: Xtreme™ Black Satin

Components Coated: Perforated Aluminium

Date Completed: 2012

Photo: Cameron Chisholm Nicol/Greg Hocking Photography

LACROSSE DOCKLANDS



Project name: Lacrosse Docklands

Location: Docklands, Australia

Colour: Eternity® Silver Kinetic Satin

Components Coated: Aluminium Extrusion
& Perforated Sheets

Date Completed: 2012

Photo: Peter Clarke Photography



NATURAL

1.5° Average Temperature
649.2mm Annual Rainfall



ETERNITY® SILVER
KINETIC SATIN



ANTIAS



Project name: ANTIAS

Location: Pyrmont, Australia

Colour: Zeus® Dark Grey Matt

Components Coated: Windows

Date Completed: 2011

Photo: Tonkin Zuliakha Greer Architects



NATURAL

17.7° Average Temperature
1214.1mm Annual Rainfall



ZEUS® DARK
GREY MATT

INMARK TOWER



Project name: Inmark Tower

Location: Sydney, Australia

Colour: Eternity® Charcoal Pearl Satin

Components Coated: Windows, Louvres & Doors

Date Completed: 2012

Photo: Parkview Group (Aust) Pty Ltd



NATURAL

17.7° Average Temperature

1214.1mm Annual Rainfall



ETERNITY®
CHARCOAL
PEARL SATIN

NUNDAH CIRCA



Project name: Nundah Circa (Building 2b)

Location: Nundah, Australia

Colours: Dark Bronze, Golden Touch, Black Ace, Natural Silver & Shimmering Champagne

Components Coated: Louvre Guards & Sliding Screens

Date Completed: 2012

Photo: Arkhefield



DARK
BRONZE



GOLDEN
TOUCH



BLACK
ACE



NATURAL
SILVER



SHIMMERING
CHAMPAGNE



NATURAL

20.5° Average Temperature

1186.2mm Annual Rainfall

PURI BANK



30 FLUOROSET®
POWDERCOAT RANGE

Project name: Puri Bank

Location: Jakarta, Indonesia

Colour: Puri Green

Components Coated: Aluminium Extrusion

Date Completed: 1994



NATURAL

28.7° Average Temperature
1706.2mm Annual Rainfall



PURI GREEN

STAR OF THE SEA PERFORMING ARTS CENTRE



20 DURATEC®
POWDERCOAT RANGE

Project name: Star of the Sea Performing Arts Centre

Location: Brighton, Australia

Colour: Berry Grey Satin

Components Coated: Louvres & Panels

Date Completed: 2011

Photo: Michael Kai Photography



NATURAL

15° Average Temperature
649.2mm Annual Rainfall



BERRY GREY SATIN

SKY CITY RESORT DARWIN



Project name: Sky City Resort Darwin

Location: Darwin, Australia

Colour: Eternity® Titanium Pearl Satin

Components Coated: Commercial Windows

Date Completed: 2011

Photo: Courtesy of Sky City Resort Darwin



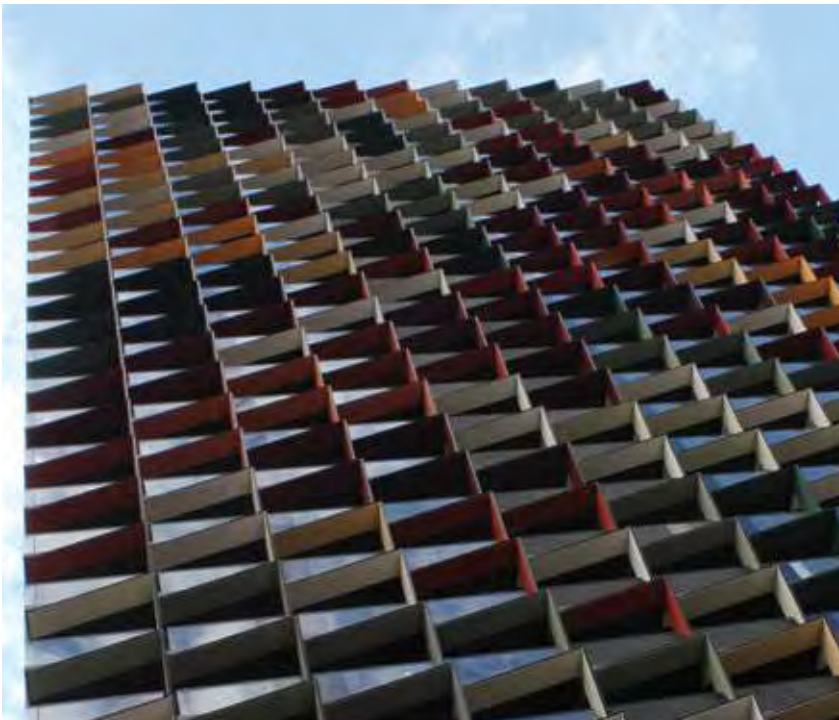
NATURAL

28.7° Average Temperature
1706.2mm Annual Rainfall



ETERNITY®
TITANIUM
PEARL SATIN

A'BECKETT TOWER



Project name: A'Beckett Tower

Location: Melbourne, Australia

Colour: 15 made to order colours

Components Coated: Louvres

Date Completed: 2010



NATURAL

24.4° Average Temperature
1149.5mm Annual Rainfall

PROJECT LISTING



PROJECT NAME	LOCATION	COUNTRY	COLOUR	COMPONENTS COATED	DATE COMPLETED
AUCKLAND SKY TOWER	Auckland	New Zealand	Telegrey	Aluminium Profiles	1997
CLYDE QUAY	Auckland	New Zealand	Pewter Pearl & Electric Cow	Joinery	2013
DELOITTE 80 QUEEN STREET	Auckland	New Zealand	Electric Cow	Curtain Wall & External Joinery	2008
EDEN PARK	Auckland	New Zealand	Telegrey	Aluminium Profiles	2011
GKBI TOWER	Jakarta	Indonesia	Grey Green	Joinery	1994
HALO APARTMENTS	St Kilda	Australia	Xtreme™ White & Xtreme™ Silver	Front Facade	2013
HDB APARTMENTS	Bukit Gombak	Singapore	Tuscany Blue	Joinery	2003
JTC FACTORY	Gul Drive	Singapore	Pewter Grey	Joinery	2003
MRT STATION	Kaoshiong	Taiwan	Taiwan Champagne	Aluminium Panels	2004
ORANGE AQUATIC CENTRE	Orange	Australia	Xtreme™ Charcoal	Aluminium Extrusion for Windows & Doors	2012
PERTH ARENA	Perth	Australia	Xtreme™ Black	Perforated Aluminium	2012
PRINCE ALFRED COLLEGE	Kent Town	Australia	Xtreme™ Charcoal	External Louvres	2012
PURI BANK	Jakarta	Indonesia	Puri Green	Aluminium Extrusion	1994
ROYAL BEACH HOTEL	Tel Aviv	Israel	Sandstone	Aluminium Profiles	2012
ROYAL RANDWICK RACECOURSE	Randwick	Australia	Xtreme™ Black	Aluminium Extrusion	2013
SKY CITY	Auckland	New Zealand	Sky Towers Silver	Panel Work	1996
SYDNEY DOMESTIC AIRPORT TERMINAL, T2 PIER A EXPANSION	Sydney	Australia	Xtreme™ Coin Satin	Window & Door Sections	2012



PROJECT NAME	LOCATION	COUNTRY	COLOUR	COMPONENTS COATED	DATE COMPLETED
C8 LIFESTYLE WORKING	Melbourne	Australia	Natural Silver	Aluminium Window Extrusion & Flat Sheets	2013
FLEXIBLE LEARNING CENTRE	Mt Isa	Australia	Black Ace	Windows & Doors	2013
GOODWOOD RESIDENCES	Bukit Timah	Singapore	Natural Silver	Aluminium Extrusions, Mullions & Louvres	2012
NAB-D2	Docklands	Australia	Natural Silver	Aluminium Trims & Glazing Sections	2012
NUNDAH CIRCA – BUILDING 2B	Nundah	Australia	Dark Bronze, Golden Touch, Black Ace, Natural Silver & Shimmering Champagne	Louvre Guards & Sliding Screens	2013
PRIMA TOWER	Melbourne	Australia	Dark Bronze	Aluminium Facade	Under Construction
SOLAIRE RESORT & CASINO	Manila	Philippines	Medium Bronze & Golden Touch	Joinery	2012
WALGA	West Leederville	Australia	Shimmering Champagne	Aluminium Windows & Door Frames	2013

PROJECT LISTING



PROJECT NAME	LOCATION	COUNTRY	COLOUR	COMPONENTS COATED	DATE COMPLETED
A'BECKETT TOWER	Melbourne	Australia	15 Made to Order Colours	Louvres	2010
ANTIAS	Pyrmont	Australia	Zeus® Dark Grey Matt	Windows	2011
ANU COLLEGE OF SCIENCE	Canberra	Australia	Notre Dame Satin	Aluminium Windows & Doors	2013
ASB HEADQUARTERS	Auckland	New Zealand	Aluco Bronze	Louvres	2013
CATANIA APARTMENTS	Wentworth Point	Australia	Zeus® Charcoal	Aluminium Windows, Doors, Commercial Frames & Panels	2012
COMMONWEALTH LAW COURT	Sydney	Australia	APO Grey	Aluminium Louvres	2005
COMPLETE OFFICE FURNITURE	Lidcombe	Australia	Berry Grey	Aluminium Windows & Door Sections	2012
EXO APARTMENTS	Victoria Harbour	Australia	Zeus® Lunar Eclipse	Aluminium Extrusion	2013
HABITAT APARTMENTS	Southbank	Australia	Eternity® Citi Silver Pearl	Aluminium Cover Plates	2013
HANGZHOU RAFFLES CITY	Zhejiang	China	Grey Matt	Aluminium Panels	Under Construction
INMARK TOWER	Sydney	Australia	Eternity® Charcoal Pearl	Windows, Louvres & Doors	2011
JAMES COOK UNIVERSITY SPECIALIST TEACHING PRECINCT	Townsville	Australia	Monument Matt	Commercial Aluminium Window Sections	2012
LACROSSE DOCKLANDS	Docklands	Australia	Eternity® Silver Kinetic	Aluminium Extrusion & Perforated Sheets	2012
MARINA EXPRESSWAY	Singapore	Singapore	Signal White	Joinery	2012
MASSEY UNIVERSITY WELLINGTON	Wellington	New Zealand	Metropolis® Coal Dust	Joinery	2011
METROPOLIS APARTMENTS	Auckland	New Zealand	Metropolis® Bronze	Joinery	1999
MULTI LEVEL CAR PARK – BRISBANE DOMESTIC TERMINAL	Brisbane	Australia	Zeus® Charcoal	Aluminium Panels	2012
NEW ENGLAND AND NORTH WEST REGIONAL CANCER CENTRE	Tamworth	Australia	Intensity® Yellow	Aluminium Window Sections	2012
POWER HOUSE APARTMENTS	Roseberry	Australia	Eternity® Silver Kinetic	Sliding Doors & Frames	2012
QANTAS LINK OVERFLOW LOUNGE	Brisbane	Australia	Inter Off White Matt	Mullions & Transoms	2012
RNA INDUSTRIAL PAVILION	Bowen Hills	Australia	Zeus® Timberland	AME 100 Louvre Blades, Flat Bars with Clips, 100x50 RHS posts, Post Spigots, Sill and Head Flashings & Angle trims	2012
ROBERT MENZIES COLLEGE	Marsfield	Australia	Zeus® Charcoal	Windows, Doors & Louvres	2012
ROBINA HEALTH PRECINCT	Robina	Australia	Zeus® Charcoal	Louvre Frames, Extrusions & Shutter Blades	2012
SKY CITY RESORT DARWIN	Darwin	Australia	Eternity® Titanium Pearl Satin	Commercial Windows	2012
SOUTH REGIONAL BUSINESS CENTRE	Brisbane	Australia	Eternity® Citi Silver Pearl Matt	Aluminium Balustrades	2012
SRI LANKA CUSTOMS HEADQUARTER BUILDING	Colombo	Sri Lanka	Arctic White	Aluminium Extrusion	2011
ST VINCENT'S HOSPITAL	Darlinghurst	Australia	Metropolis® Charcoal	Windows & Doors	2009
STAR OF THE SEA PERFORMING ARTS CENTRE	Brighton	Australia	Berry Grey Satin	Louvres & Panels	2011
SOUTH EASTERN HYDROTHERAPY POOL AND GYM	Noble Park	Australia	Zeus® Charcoal	Aluminium Cladding & Trims	2012
STOCKLAND TOWNSVILLE	Townsville	Australia	Zeus® Lunar Eclipse	Windows & Doors	2012
SUN ALLIANCE BUILDING / VERO CENTRE	Auckland	New Zealand	Alucobond® Mica	Joinery	1999
SUNSHINE HOSPITAL	St Albans	Australia	Zeus® Charcoal	Aluminium Extrusion	2012
TEPID BATCH REFURBISHMENT	Auckland	New Zealand	Sandstone Grey	Louvres	2012
UNIVERSITY OF WAIKATO STUDENT CENTRE	Hamilton	New Zealand	Eternity® Pewter & Bell Bronze	Joinery	2011
UTAS SCHOOL OF NURSING	Hobart	Australia	Eternity® Silver Kinetic Satin	Windows & Doors	2012
VICTORIAN DESALINATION PLANT	Wonthaggi	Australia	Wayward Grey Satin	Aluminium Cladding	2012
WELLINGTON HOSPITAL	Wellington	New Zealand	Bronze Brown	Joinery	2008

HOW TO SPECIFY



Specification of powder coating finishes on architectural aluminium and other metal substrates can be a complex process and the following items should be considered;

- What is the most appropriate product for your project?
- Does the product offer a genuine performance warranty?
- What assurance is there that the coating is applied correctly?
- How do you ensure that your specification is not misinterpreted?

AAMA STANDARDS

With over 50 years of experience, the AAMA (American Architectural Manufacturer's Association) is regarded as the standards leader for finishes on architectural aluminium. The AAMA objective is to develop and improve quality standards, encourage research & development and set benchmarks for product performance of architectural products.

For finishing of commercial architectural aluminium, Dulux recommend two internationally recognised AAMA standards, AAMA 2604 and AAMA 2605. Specifying powder coatings that comply with one of the below AAMA standards removes all doubt for the fabricator and applicator. The supply chain will be aware of the standard of product demand for the project, as the standards spell out the level of both colour performance and film properties required. The Dulux powder coating products that meet or exceed these standards are shown below.

	 FLUOROSET® POWDERCOAT RANGE	 DURATEC® POWDERCOAT RANGE	 ELECTRO™ POWDERCOAT RANGE	 DURALLOY® POWDERCOAT RANGE
AAMA 2605-11	Yes	No	No	No
AAMA 2604-10	Yes	Yes	Yes	No
AAMA 2603-5	Yes	Yes	Yes	Yes
Coating Type	Ultra Durable Fluoropolymer	Super Durable Polyester	Super Durable Polyester	Durable Polyester
Durability Warranty*	30 years	20 years	20 years	10 years

*Subject to the terms and conditions of the relevant product warranty. Please contact your local Dulux representative for further details.

ENVIRONMENTAL CONSIDERATIONS

Conditions in each location can vary greatly and this will affect the performance of various finishes. So it is vital that before specifying a given powder coating, the environmental influences on the project are understood. The resistance of each powder coating to the physical and chemical extremes of these climates determines the most suitable product.

MILD (TO MODERATE)

- Remote from coastal, heavy industrial or tropical locations
- With very light marine proximity, such as sheltered bays which are well away from coastlines
- Sheltered from marine coastal locations or from industrial fallout

TROPICAL

- In high humid locations, typically 65% – 100% all year round
- Remote from coastal activity

SEVERE





- In marine locations, directly in the path of sea spray
- In heavy industrial locations

EXTREME

Some environments are so extreme, that the performance of any surface finish may be compromised. For severe environments, whether they are marine and/or industrial, we recommend that you contact Dulux before specifying any powder coating finish, to ensure the site meets with our service and warranty conditions.

DIFFERENT PROJECTS HAVE DIFFERENT REQUIREMENTS

- Residential properties are typically easy to maintain, given their height and access.
- High-rise projects are less sheltered from neighbouring buildings, raising their exposure and reducing their ease of maintenance.
- Monumental projects attract the most attention and have the highest standards required to uphold the reputation expected from landmark sites.

PROJECT TYPE	ENVIRONMENT	 FLUOROSEAL POWDERCOAT RANGE	 DURATEC POWDERCOAT RANGE	 ELECTRO POWDERCOAT RANGE	 DURALLOY POWDERCOAT RANGE
Monumental	Mild, Tropical or Severe	✓			
Prestigious Commercial Development	Severe	✓			
Prestigious Commercial Development	Mild or Tropical	✓	✓	✓	
Commercial Development (>3 levels)	Severe	✓	✓	✓	
Commercial Development (>3 levels)	Mild or Tropical	✓	✓	✓	
Commercial Development (<4 levels)	Mild, Tropical or Severe	✓	✓	✓	
Residential (>3 levels)	Severe	✓	✓	✓	
Residential (>3 levels)	Mild or Tropical	✓	✓	✓	
Residential (<3 levels)	Standard	✓	✓	✓	✓

OUR DURABILITY WARRANTY

Only Dulux Registered Applicators are issued with our Durability Warranties after demonstrating their capability to meet stringent quality conditions and international standards. Each Dulux Applicator has invested heavily in their business to guarantee their performance in preparing the aluminium and applying Dulux coatings.

For a surface coating to provide maximum performance, the metal to be coated must be properly cleaned and prepared, the powder must be applied in accordance with Dulux recommendations and the coated metal shall be thoroughly tested for quality assurance before being released for fabrication.

SPECIFICATION CHECKLIST

- ✓ The most appropriate AAMA specification
- ✓ Environmental aspect and project type
- ✓ Product features, including performance and colour range
- ✓ Design and installation considerations
- ✓ Warranty terms and conditions
- ✓ Ensure the specification of the chosen finish is clearly in line with the above points

To ensure there is no misinterpretation of what you want on your project:

- ✓ Specify the Dulux "Product Name and Code" to meet
- ✓ Nominate the AAMA standard required
- ✓ To be applied by a Dulux Registered Applicator
- ✓ Specify the durability warranty period

For example

"Fluoroseal® Xtreme™ Coin Satin 964-7289S to meet AAMA 2605-11. Product must be applied by a Dulux Registered Applicator and must offer a 30 year durability warranty."

OUR PAST IS AS IMPORTANT AS OUR FUTURE

The original company of Dulux, BALM, was founded in 1918 in Sydney, Australia, when they acquired the Australasian United Paint Company. BALM acquired Australian ownership of the registered Dulux Trade Mark in 1933 in order to access the newly developed paint technology from E.I Du Pont de Nemours.

ICI Group bought and increased its shareholdings in BALM between 1946 and 1955 and BALM changed its name to Dulux Australia Ltd in 1971. In order to service a growing industrial industry, the Powder & Industrial Coatings Division was established in the same year.

In 1986, ICI Australia acquired 100% ownership of Dulux Australia Ltd. Acratex®, Selley's®, British Paints® and Berger® were then acquired to expand the coatings business.

ICI Australia was merged into the ORICA Group and formed the ORICA Consumer Products Group, maintaining continuity of developing production and sales of its coatings and other chemical products all around the world in 1997.

In July 2010, Dulux demerged from ORICA and now independently operates as a standalone entity. DGL International was established to accelerate the fast developing coatings markets including China, Malaysia, Singapore and Vietnam.

Dulux has a remarkable portfolio of brands including British Paints®, Selley's®, Yates®, Cabot's®, Berger® and Hortico®. The core of Dulux's business is its formulation, manufacture and sales of coatings products, which have been applied to projects all around the world.



DULUXGROUP

LONG HISTORY, BRIGHT FUTURE

BALM, the original company of Dulux Australia Ltd was founded in Sydney, Australia.



1918

BALM changed names to Dulux Australia Ltd.



1971

ICI Australia acquired 100% of share ICI Fluoroseal® coatings to the Chinese Architects and Developers as premium quality coatings.



1997

Acquisition of Yates Garden Care business



2004

1933



BALM acquired Australian ownership of the registered Dulux trademark.

1986



ICI Australia acquired 100% share of Dulux Australia Ltd and went on to acquire Acratex®, Selley's®, British Paints® and Berger®.

2001



Hong Kong based Camel Paint Group became the agent for Orica Fluoroseal® PVF2 coatings and commenced distribution in China, Hong Kong and Macau.

2010



DuluxGroup demerged from Orica Group and became an ASX-listed company

OUR LOCATIONS

With 7 manufacturing sites and a comprehensive supply chain network that spans Australia, New Zealand and China.



● **POWDER COATING
MANUFACTURING SITES**
Guangdong Province, China
Dandenong, Victoria, Australia
Auckland, New Zealand

● **INDUSTRIAL COATING
MANUFACTURING SITES**
Guangdong Province, China
Rocklea, Queensland, Australia
Gracefield, Wellington, New Zealand
Shanghai, China

● **INNOVATION & TECHNOLOGY CENTRES**
Clayton, Victoria, Australia
Dandenong, Victoria, Australia
Guangdong Province, China
Auckland, New Zealand



POWDER & INDUSTRIAL COATINGS

OUR OFFICE LOCATIONS

Dulux Powder & Industrial Coatings

New Zealand Office

31B Hillside Road
Glenfield, Auckland
New Zealand

Tel: (649) 441 8244

Fax: (649) 441 8242

Tel: 0800 800 975 (Customer Service – New Zealand)

Fax: 0800 476 9337 (Customer Service – New Zealand)

Web: www.duluxpowdercoatings.co.nz

DGL International Powder & Industrial Coatings

Singapore Office

Blk 265
#02-275
Serangoon Central Drive
Singapore 550265

Tel: (65) 6838 1010

Fax: (65) 6733 5125

Dulux Powder & Industrial Coatings

Australian Office

1–15 Pound Road West
Dandenong South VIC 3175

Tel: (61) 3 8787 4500

Fax: (61) 3 8787 4542

Tel: 13 24 99 (Customer Service – Australia)

Fax: 1800 804 649 (Customer Service – Australia)

Web: www.duluxpowders.com.au

WEATHER CONDITION SOURCES: www.bom.gov.au/climate

Dulux, Fluoraset, Duratec, Eternity and Duralloy are registered trademarks and Electro and Xtreme are trademarks of DuluxGroup (Australia) Pty Ltd. Zeus is a registered trademark in Australia and a trademark in New Zealand of DuluxGroup (Australia) Pty Ltd.

Any advice, recommendation, information, assistance or service provided by DuluxGroup (Australia) Pty Ltd in relation to goods manufactured by it or use and application is given in good faith and is believed by DuluxGroup (Australia) Pty Ltd to be appropriate and reliable. However, any advice, recommendation, information, assistance or service provided by DuluxGroup (Australia) Pty Ltd is provided without liability or responsibility PROVIDED THAT the foregoing shall not exclude, limit, restrict or modify the rights entitlements and remedies conferred upon any reason, or liabilities imposed by DuluxGroup (Australia) Pty Ltd by any condition or warranty imposed by a commonwealth, State or Territory Act or ordinance rendering void or prohibiting such exclusion, limitation, restriction or modification. The images shown in this brochure are examples of where Dulux Powder and Industrial Coatings have been used. The information in this brochure is true and correct at the time of print. Colours shown are as close as possible to actual powder colours. Please note, due to limitations of the printing process, photographic and printed images may not represent the true colour. Always confirm your colour choice with Dulux Powder & Industrial Coatings Sample Chips.

© Copyright 2013 DuluxGroup (Australia) Pty Ltd.