



Dulux®

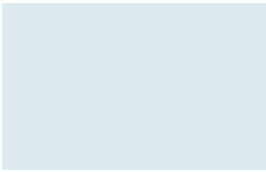
Known  
For Excellence

Powder Coat  
Colour Selector  
& Specifications

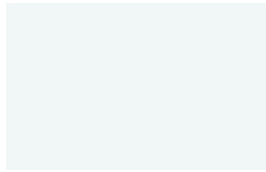
Duratec™  
Electro™  
Fluoroseal®

52  
Expansive  
Colours

Dulux® has a long history of providing extremely durable powder coating finishes for monumental commercial construction projects across Asia, Australia, New Zealand and the Middle East.  
Our range of premium products are formulated to provide outstanding durability performance in the harshest environments.



**Arctic White**  
90058851  
R224 G232 B237 – LRV 82%  
Satin



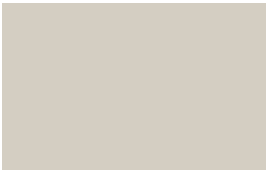
**Zeus® White**  
9001110G  
R241 G245 B243 – LRV 91%  
Gloss



**Appliance White**  
90058853  
R243 G244 B240 – LRV 91%  
Satin



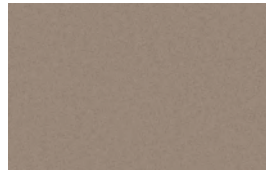
**Eternity® Linen Pearl**  
9001138Q  
R226 G222 B212 – LRV 76%  
Satin



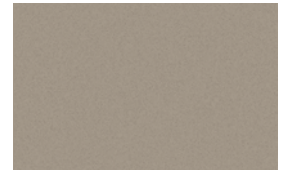
**Matt Canvas Cloth**  
9007327M  
R208 G204 B192 – LRV 64%  
Matt



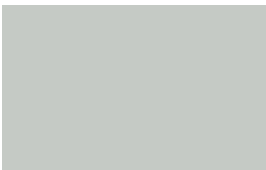
**Eternity® Nickel Pearl**  
90088395  
R163 G155 B142 – LRV 38%  
Matt



**Copper Metallic Kinetic®**  
9007183K  
R146 G134 B123 – LRV 29%  
Matt



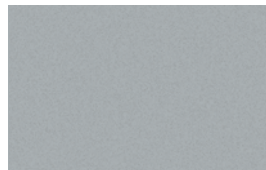
**Matt Champagne Kinetic®**  
9003059K  
R156 G147 B133 – LRV 34%  
Matt



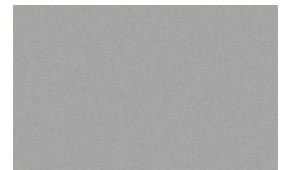
**Zeus® Lunar Grey**  
90088417  
R198 G201 B196 – LRV 61%  
Matt



**Zeus® Silver Grey**  
90051272  
R171 G175 B177 – LRV 47%  
Matt



**Eternity® Citi Silver Pearl**  
9007024Q  
R167 G172 B175 – LRV 45%  
Matt



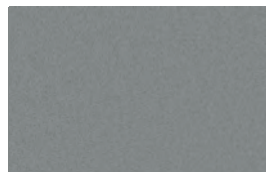
**Eternity® Chain Pearl**  
90089119  
R165 G166 B163 – LRV 42%  
Matt



**Eternity® Star Pearl**  
9007005F  
R153 G157 B158 – LRV 38%  
Flat



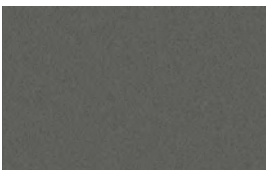
**Eternity® Silver Kinetic®**  
9007160K  
R147 G150 B152 – LRV 35%  
Satin



**Eternity® Pewter Pearl**  
90088396  
R128 G132 B132 – LRV 27%  
Satin



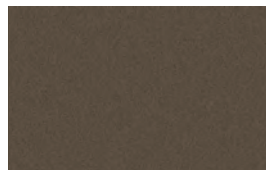
**Zeus® Grey**  
90088416  
R109 G112 B115 – LRV 20%  
Satin



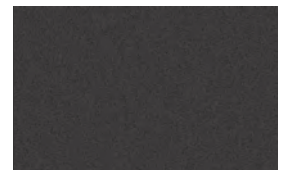
**Eternity® Titanium Pearl**  
90087728  
R91 G92 B88 – LRV 14%  
Satin



**Zeus® Timberland**  
9007315S  
R84 G 84 B 80 – LRV 12%  
Satin



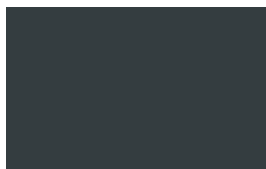
**Eternity® Bronze Pearl**  
90088393  
R82 G74 B62 – LRV 10%  
Satin



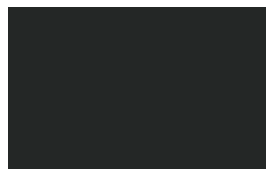
**Eternity® Charcoal Pearl**  
90088394  
R55 G54 B54 – LRV 6%  
Satin



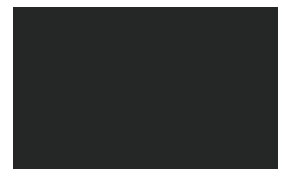
**Zeus® Charcoal**  
90087732  
R60 G64 B68 – LRV 8%  
Satin



**Zeus® Dark Grey**  
90051275  
R58 G64 B67 – LRV 8%  
Matt



**Zeus® Black**  
90088702  
R43 G44 B44 – LRV 4%  
Matt



**Zeus® Lunar Eclipse**  
90087734  
R43 G44 B44 – LRV 4%  
Satin













For many years, the most widely specified super durable coating on high rise commercial projects throughout Australia and New Zealand.

Our advanced polyester resin technology, combined with high performance pigments, exceed the internationally recognised performance standard AAMA 2604-10, delivering excellent gloss and colour retention when compared to standard polyester powder coatings.

- High rise commercial projects
- Major commercial and residential developments, irrespective of the building height and in most environments
- Developments further than 10 metres from salt water
- Achieves AAMA 2604-10 performance standard
- Supported by a 20 year durability warranty\* when applied by a Dulux® Registered Applicator

DURATEC®  
INTENSITY®

Dulux®	Duratec® Intensity®	10 Comprehensive Colours
		
<b>Intensity® Moonlight</b> 9002004S R239 G208 B65 – LRV 67%	<b>Intensity® Leaf</b> 9006167S R74 G138 B64 – LRV 24%	Satin
		
<b>Intensity® Sunshine</b> 9002084G R233 G174 B53 – LRV 52%	<b>Intensity® Evergreen</b> 9006005S R39 G96 B62 – LRV 12%	Gloss
		
<b>Intensity® Summer</b> 9004008G R229 G87 B31 – LRV 27%	<b>Intensity® Coast</b> 9005233S R16 G93 B134 – LRV 13%	Gloss
		
<b>Intensity® Desert</b> 9004227S R138 G56 B46 – LRV 11%	<b>Intensity® Reef</b> 9005011G R40 G108 B181 – LRV 18%	Satin
		
<b>Intensity® Flame</b> 9004007G R181 G44 B39 – LRV 14%	<b>Intensity® Storm</b> 90089584 R42 G51 B80 – LRV 6%	Gloss

KNOWN FOR EXCELLENCE  
COMMERCIAL COLOUR COLLECTION

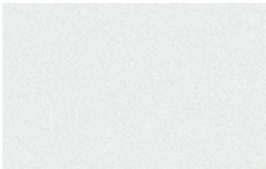
# ELECTRO™



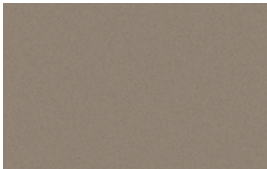
With an anodised look, Electro™ is cleverly designed to subtly change in appearance as light conditions alter throughout the day. With our advanced polyester resin technology, Electro™ is supported by a 20 year durability warranty\*, exceeding the performance requirements set out in the internationally recognised AAMA 2604-10 standard.

- High rise commercial projects
- Commercial & residential developments irrespective of the building height and in most environments
- Developments further than 10 metres from salt water
- Achieves AAMA 2604-10 performance standard
- Supported by a 20 year durability warranty\* when applied by a Dulux® Registered Applicator

Dulux®	Electro™	12 Comprehensive Colours
--------	----------	--------------------------



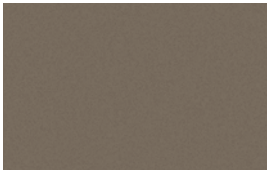
**Flat White**  
9061200F  
R240 G242 B240 – LRV 90%



**Shimmering Champagne**  
9063116K  
R138 G128 B115 – LRV 27%



**Natural Silver**  
9067365K  
R165 G168 B167 – LRV 43%



**Scintillation**  
9068186K  
R114 G105 B93 – LRV 19%



**Vintage Silver**  
9067377K  
R125 G126 B128 – LRV 25%



**Golden Touch**  
9068182K  
R136 G119 B93 – LRV 24%



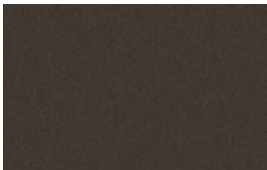
**Subtle Blue**  
9065177K  
R173 G192 B202 – LRV 55%



**Burnished Copper**  
9068185K  
R85 G62 B57 – LRV 9%



**Blue Suede Shoes**  
9065178K  
R104 G118 B125 – LRV 22%



**Dark Bronze**  
9068184K  
R59 G53 B47 – LRV 6%



**Green Tea**  
9066197K  
R97 G106 B102 – LRV 18%



**Black Ace**  
9069116F  
R44 G44 B45 – LRV 4%



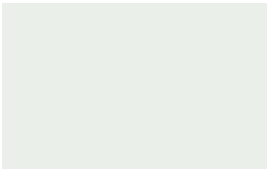
Fluoraset® is formulated for extremely harsh environments where the highest level of durability is required.

It is supported by a 30 year durability warranty\* giving you confidence that your coating will stand the test of time.

- Projects where product performance is under constant review
- All commercial and residential projects, irrespective of height
- When class leading colour and gloss retention is desired
- Developments further than 10 metres from salt water
- Exceeds AAMA 2605-11 performance standard
- Supported by a 30 year durability warranty\* when applied by a Dulux® Registered Applicator

# FLUORASET®

Dulux®	Fluoraset® Xtreme™	6 Comprehensive Colours
--------	--------------------	-------------------------



**Xtreme™ White**  
9641157M  
R235 G236 B231 – LRV 85%  
Satin



**Xtreme™ Coin**  
9647289S  
R165 G170 B173 – LRV 44%  
Satin



**Xtreme™ Champagne**  
9647302Q  
R160 G158 B153 – LRV 39%  
Satin



**Xtreme™ Silver**  
9647273Q  
R148 G152 B154 – LRV 36%  
Satin



**Xtreme™ Charcoal**  
9647297M  
R59 G62 B66 – LRV 7%  
Satin



**Xtreme™ Black**  
96456970  
R42 G42 B43 – LRV 4%  
Satin

The colours represented in this brochure are indicative only. They have been matched to outdoor viewing and are as close to the actual product colours as modern printing techniques allow. Colour appearance may vary according to light source.

SPECIFY  
A  
PRODUCT

Specification of powder coating finishes on architectural aluminium and other metal substrates can be a complex process and the following items should be considered;

- What is the most appropriate product for your project?
- Does the product offer a genuine durability warranty?
- What assurance is there that the coating is applied correctly?
- How do you ensure that your specification is not misinterpreted?

AAMA STANDARDS

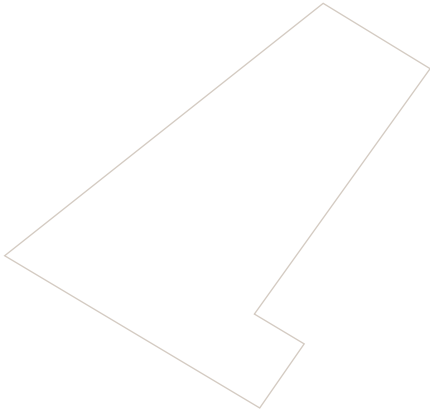
With over 50 years of experience, the AAMA (American Architectural Manufacturer’s Association) is regarded as the standards leader for finishes on architectural aluminium. The AAMA objective is to develop and improve quality standards, encourage research & development and set benchmarks for product performance of architectural products.

For finishing of commercial architectural aluminium, Dulux® recommend two internationally recognised AAMA standards, AAMA 2604 and AAMA 2605. Specifying powder coatings that comply with one of the below AAMA standards removes all doubt for the fabricator and applicator. The Dulux® powder coating products that meet or exceed these standards are shown below.

	Duratec®	Electro™	Fluoroseal®
AAMA 2605-11	No	No	Yes
AAMA 2604-10	Yes	Yes	Yes
AAMA 2603-05	Yes	Yes	Yes
Coating Type	Super Durable Polyester	Super Durable Polyester	Ultra Durable Fluoropolymer
Durability Warranty*	20 years	20 years	30 years

\*Subject to terms and conditions of the relevant product warranty. Please contact your local Dulux representative for further details.

PROJECT  
REQUIREMENTS



- Residential properties are typically easy to maintain, given their height and access.
- High-rise projects are less sheltered from neighbouring buildings, raising their exposure and reducing their ease of maintenance.
- Monumental projects attract the most attention and have the highest standards required to uphold the reputation expected from landmark sites.

SPECIFICATION  
CHECKLIST

- ✓ The most appropriate AAMA specification
- ✓ Environmental aspect and project type
- ✓ Product features, including performance and colour range
- ✓ Design and installation considerations
- ✓ Warranty terms and conditions
- ✓ Ensure the specification of the chosen finish is clearly in line with the above points

To ensure there is no misinterpretation of what you want on your project:

- ✓ Specify the Dulux® “Product Name and Code” to meet
- ✓ The required AAMA standard
- ✓ To be applied by a Dulux® Registered Applicator
- ✓ Specify the durability warranty period

For example

“Fluoroset® Xtreme™ Coin Satin 964-7289S to meet AAMA 2605-11.

Product must be applied by a Dulux® Registered Applicator and must offer a 30 year durability warranty.”

Project Type	Environment	Duratec®	Electro™	Fluoroset®
Monumental	Mild, Tropical or Severe			○
Prestigious Commercial Development	Severe			○
Prestigious Commercial Development	Mild or Tropical	○	○	○
Commercial Development (>3 levels)	Severe	○	○	○
Commercial Development (>3 levels)	Mild or Tropical	○	○	○
Commercial Development (<4 levels)	Mild, Tropical or Severe	○	○	○
Residential (>3 levels)	Severe	○	○	○
Residential (>3 levels)	Mild or Tropical	○	○	○



POWDER & INDUSTRIAL COATINGS

KNOWN FOR EXCELLENCE  
COMMERCIAL COLOUR COLLECTION

OFFICES	ADVICE LINE	
<b>Australia</b> Dulux Powder & Industrial Coatings 1 – 15 Pound Road West Dandenong South VIC 3175 T. (61) 3 8787 4500 F. (61) 3 8787 4542 Customer Service T. 13 24 99 F. 1800 804 649	<b>New Zealand</b> Dulux Powder & Industrial Coatings 31B Hillside Road Glenfield, Auckland New Zealand T. (649) 441 8244 F. (649) 441 8242 Customer Service T. 0800 800 975 F. 0800 476 9337	<b>Singapore</b> DGL International Powder & Industrial Coatings Blk 265 #02-275 Serangoon Central Drive Singapore 550265 T. (65) 6838 1010 F. (65) 6733 5125
<p>Our dedicated consultants can help simplify the specification process, saving you time and money by providing the right coating advice for your project.</p> <p> <b>Call 13 24 99 or visit</b> <b><a href="http://www.duluxpowders.com.au">www.duluxpowders.com.au</a></b></p> <p> </p>		

Dulux, Fluoraset, Duratec, Eternity, Intensity and Kinetic are registered trademarks and Electro and Xtreme are trademarks of DuluxGroup (Australia) Pty Ltd. Zeus is a registered trademark in Australia and a trademark in New Zealand of DuluxGroup (Australia) Pty Ltd. Any advice, recommendation, information, assistance or service provided by DuluxGroup (Australia) Pty Ltd in relation to goods manufactured by it or use and application is given in good faith and is believed by DuluxGroup (Australia) Pty Ltd to be appropriate and reliable. However, any advice, recommendation, information, assistance or service provided by DuluxGroup (Australia) Pty Ltd is provided without liability or responsibility PROVIDED THAT the foregoing shall not exclude, limit, restrict or modify the rights entitlements and remedies conferred upon any reason, or liabilities imposed by DuluxGroup (Australia) Pty Ltd by any condition or warranty imposed by a Commonwealth, State or Territory Act or ordinance rendering void or prohibiting such exclusion, limitation, restriction or modification. The information in this brochure is true and correct at the time of print. Colours shown are as close as possible to actual powder colours. Please note, due to limitations of the printing process, photographic and printed images may not represent the true colour. Always confirm your colour choice with Dulux Powder & Industrial Coatings Sample Clips.

© Copyright 2014 DuluxGroup (Australia) Pty Ltd.